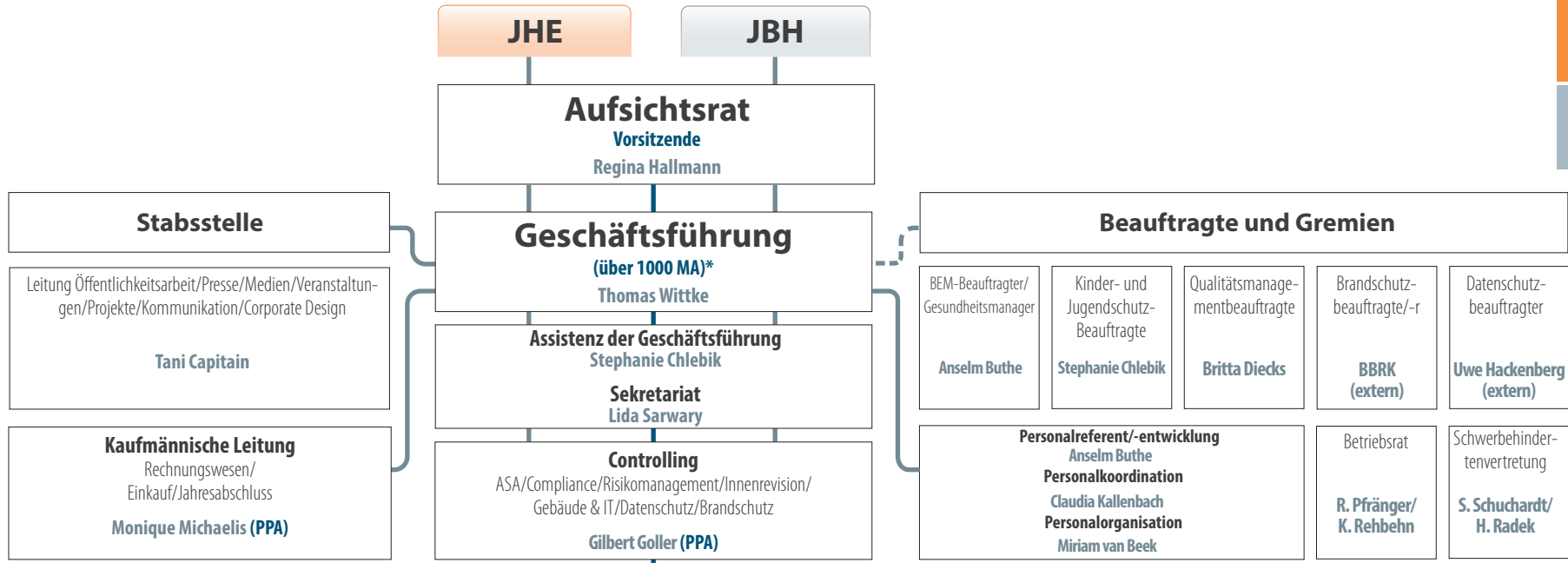
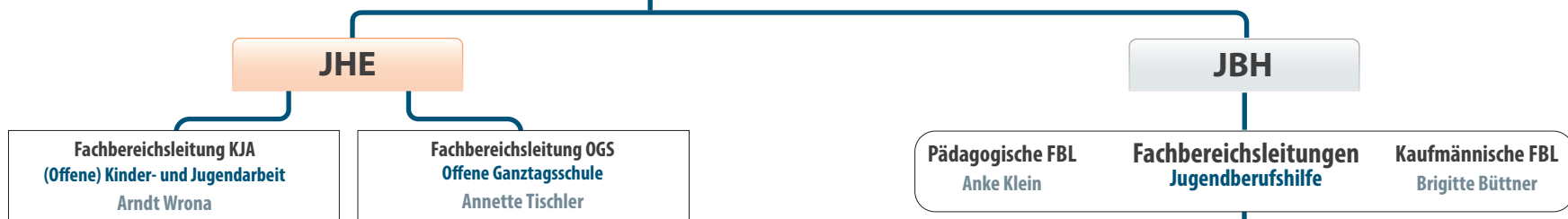


1. Führungsebene (GF + PPA)



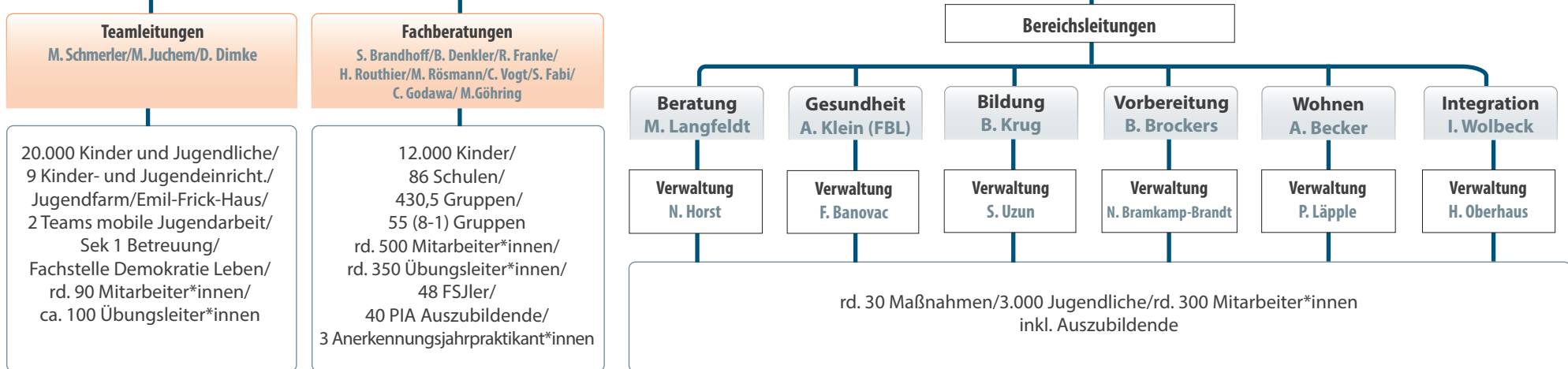
2. Führungs-
ebene

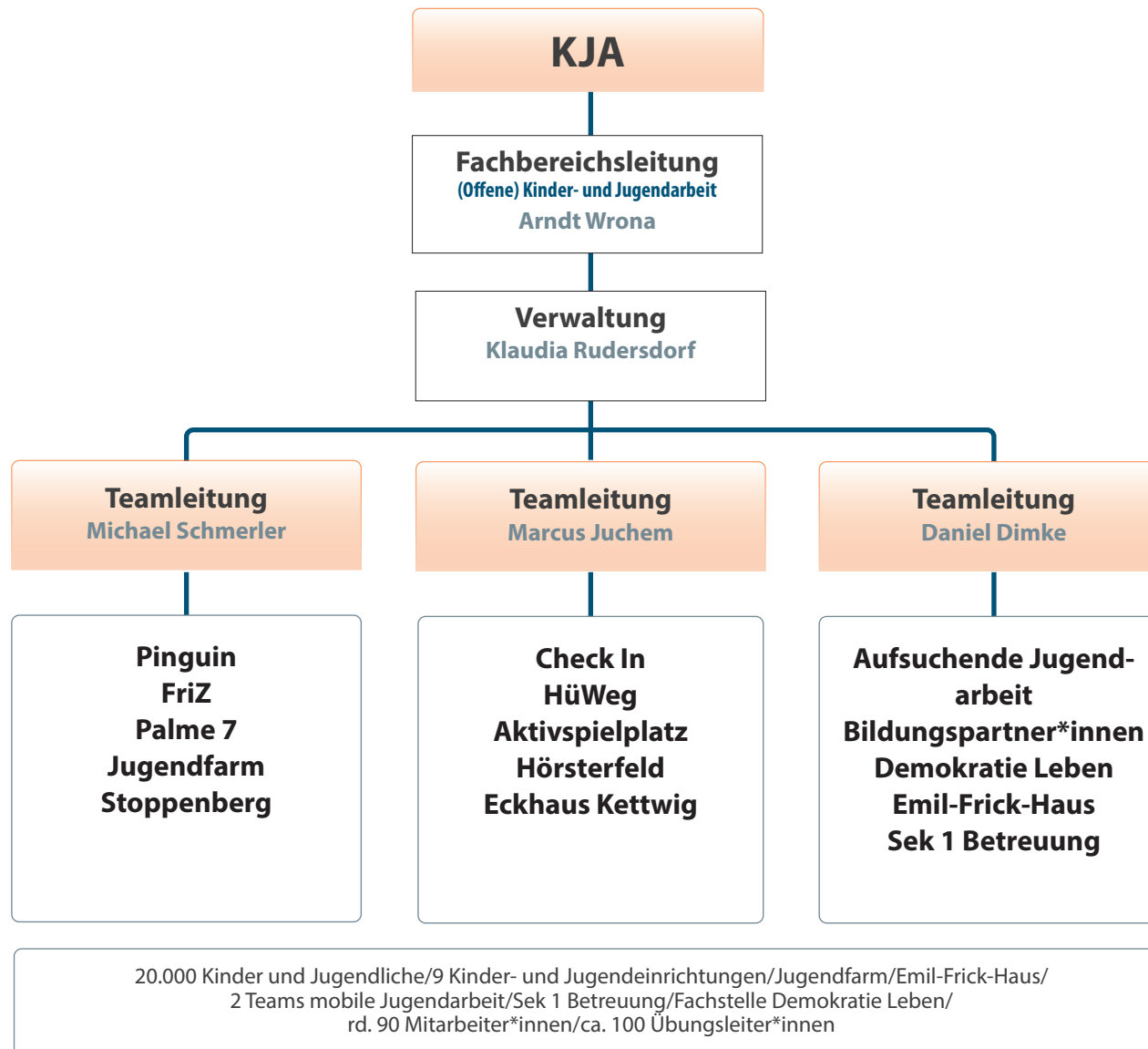


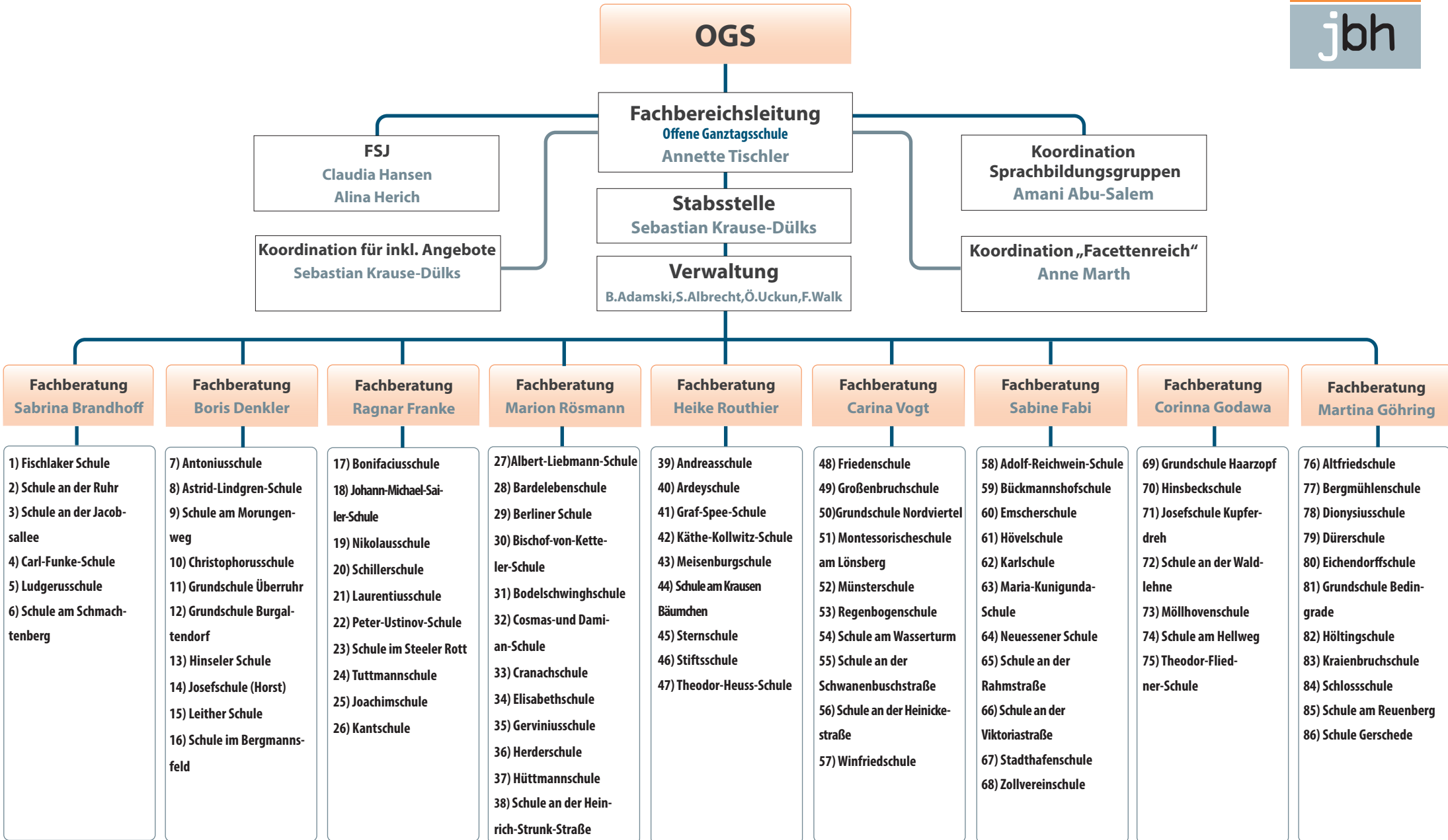
Stand: 09/2022
PPA = Gesamtprokura

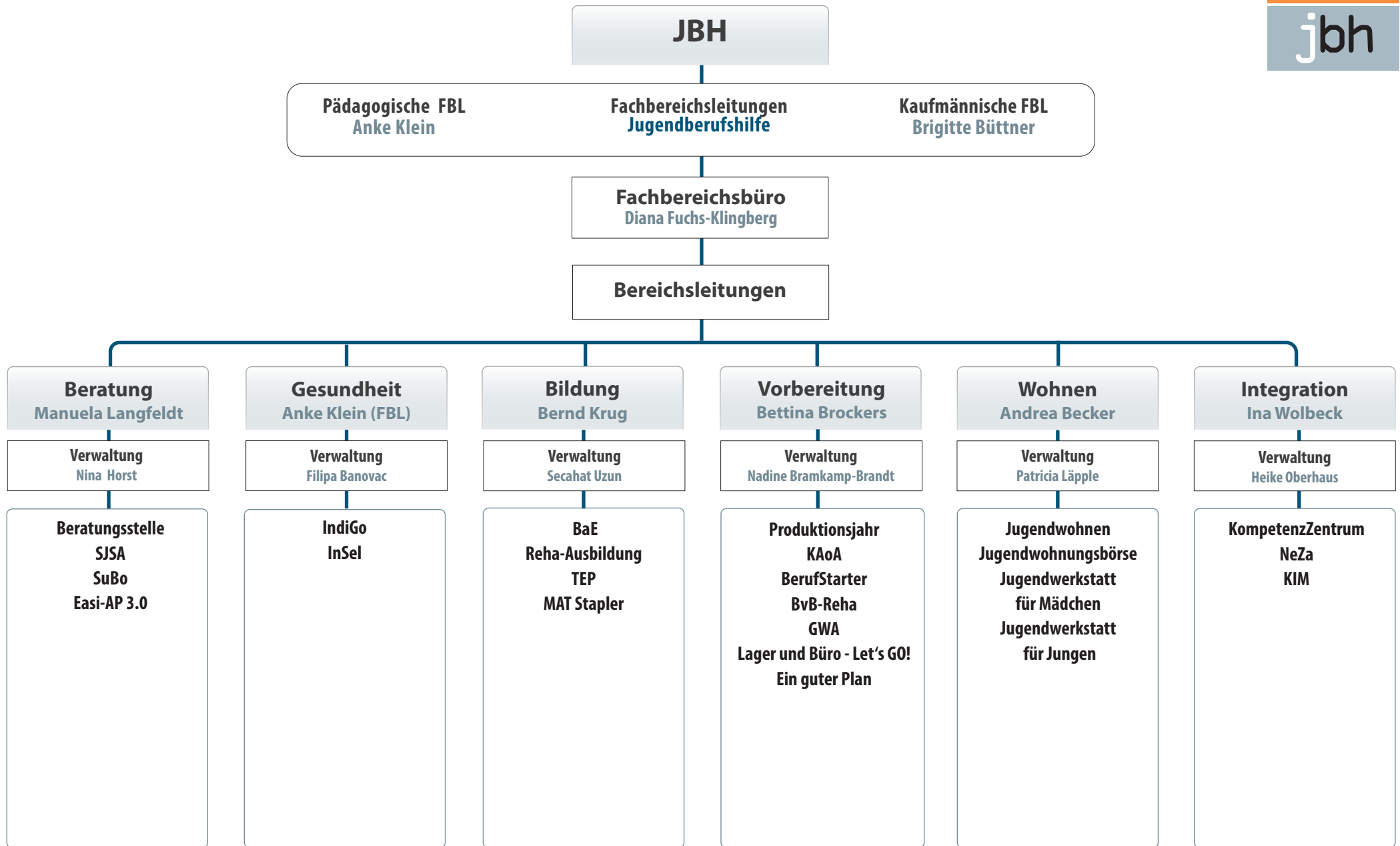
* rd. 850 hauptamtliche MA
rd. 150 Auszubildende, FSJler, etc.

3. Führungs-
ebene









rd. 30 Maßnahmen/3.000 Jugendliche/rd. 300 Mitarbeiter*innen inkl. Auszubildende